

Corkscrew Collector Version 9.0 Users' Guide

Last updated August 1, 2012

I. Introduction

This program is a companion to SCReWBase which is the Catalogue that is used as a reference for corkscrew collectors World-wide.

SCReWbase was designed by Fred Kincaid, Frank Ellis, Fred O'Leary and Joe Paradi to address the needs of corkscrew collectors for a comprehensive and knowledgeable corkscrew catalogue. The first software was built by Ms. Kathleen Cinelli and all versions of Corkscrew Collector 3.6 and earlier was her work. The new version first released in 2008 obsoletes everything as the software is a complete rebuild. However, the connection between SCReWBase and Collector is much stronger in this version and, in fact; **Corkscrew Collector is only available with SCReWBase because of the deep integration designed into it.**

The first release of Corkscrew Collector (CC6) was designed with the same technological ideas as SCReWBase and is quite similar to it, but really it is much more complex. The new program encompasses the ideas since we abandoned the old program and excludes the problems of the old – this release of the software was designed and built by Joseph A. Paradi (Joe Paradi's son).

Moreover, for those who had already used CC3.6 or earlier versions, a data conversion program is provided – for a **ONCE ONLY USE** because ***once you convert and add new records, there is no going back!*** If you ignore this advice, you may wipe out all your work, so if you are unsure of anything, just contact us! Please heed this advice and ***always back up your work before you try something new!***

The latest release is "CC9" dated August 2012 and has a number of improvements over CC8 – this Users' Guide reflects CC9. There are additional features, many improvements in the way users enter data and we tried hard to make everything clear and user friendly.

II. Organisation

The SCReWCode is built from 3 alphabetic and 3 numeric characters (e.g. **ABc123**). But, in CC the user can use any coding system s/he wishes to, however, the best strategy is to use an ***augmented*** SCReWCode (the equivalent SCReWCode plus a lower case letter). A collector may have more than one copy of a corkscrew so, that must also be allowed for, as well as the instances when the corkscrew in question does not yet (or maybe never will) exist in SCReWBase.

So let us first see how this works for those who adopt the SCReWBase coding system for identification of their own corkscrews. The first capital letter is the **Class** designator, the second capital letter stands for the **Type** of a corkscrew under the Class and the third letter is lower case and is the **style** which is specific to the Class/Type under which it is. Finally, the 3 numeric digits are just serial numbers for the C/T/s codes – just see the SCReWBase Users' Guide for more explanation.

Therefore, a user who adopts the SCReWCode for CC will have the same Code as in SCReWBase plus a lower case letter of the alphabet (a, b, c,...z) after the 6 digit code – **Abc123a** for the first copy and **Abc123b** for the second and so on. CC was built to make life really easy for this plan as it will ask for the code and assign the small letters after the code automatically. This means that you never have to keep track of how many you have or what the last letter was. CC will fill in the fields and include the SCReWCode in SCReWBase in the field for it for you, plus the entry date as well. Now you are ready to fill in the fields as you want them.

Another important feature is the **Public/Private** mode. If you are running the software and someone is with you who is watching what you are doing, you may not want to show them your private information, such as how much you paid for it, who you bought it from etc. But when you are alone working with the system, the **Private** view is what you will use where all information is available. We will show you how this works later in this document.

For those users who decide to use their own coding system as many had before these programs were first developed, there is the issue of converting the old codes to new ones, if you decide to do it. This is not as big a job as you think but if you do want to do this, contact us first. If you stay with your coding system, the CC software allows this as an option and then all works as normal, except you have to enter the equivalent SCReWCode manually and the program won't keep track of the number of the copies you may have (in other words, it won't assign the lower case letters a,b,c,...z).

If you have a corkscrew that is not in SCReWBase, there is still an opportunity to enter a record. SCReWBase was designed to take this into consideration as there are no "900" numbers in SCReWBase – that is no SCReWCode such **Abc910** can exist. All 900 and above numbers are reserved for corkscrews in CC that do not have SCReWBase entries. So records are created by the user just establishing the C/T/s letters and CC assigns the 900 number in sequence. For example, you have a Figural (squirrel) Wild animal and it is a "T" pull – this gives you a code of **FWt** and the software will then build the code **FWt900a** for you as this is the first such piece not in SCReWBase. But, if you had already a piece that was not in SCReWBase but was the same **FWt** code, then the software would create the code **FWt901a** or

if you had a second copy of the same squirrel already, you would enter **FWt900** and the software would create the code **FWt900b** – it is this easy and convenient!

In a future release there will be a function to submit all 900 coded records to SCRewBase for potential inclusion into SCRewBase. For those who use their own coding system, this will not work either and they would have to submit new finds via e-mail.

This complete redesign and rebuild of the Corkscrew Collector program is much more user friendly and extremely easy to use. The following pages will explain what each of the functions (the purpose) are and how to use them. Many functions and operations are identical to SCRewBase but these will be repeated here. Naturally, the two programs were very deliberately designed to have the same look-and-feel and the way they operate so the user does not have to learn a whole new protocol for each.

III. Page layout – what is available

Here is what a typical page looks like when it is in the *Public* mode:

Corkscrew Collector 9

File Reports Tools Help

2573 of 4475

MNI250

Class <ALL> Type <ALL> Style <ALL> Coll

Code: MNR842b ScrewCode: MNR842 ShowSB Status: Collection Last Upd: 04/05/2008

Class: M MECHANICALS, FRAMES Type: N N - THREADED NECI Style: r right hand thread

Description: Other Window Barrels, Italian: three post

Comments:

VARIATIONS: Many handle shapes; brass or nickel plated steel construction, three, four, six pillars, Archimedeian or bladed worms.
PICTURED: Brass example with center point bladed worm; unmarked, with unusual three post design
MARKINGS: Most unmarked
OPERATION: Starts with the worm fully extended. Turning handle clockwise inserts worm (entire piece rotates).

Country of Origin: Italy Previous Ref #:

Manufacturer: Mr Date:

Type of Worm: Bladed Worm Quality: Excellent

Size:

Markings:

Advertising:

Quantity: 1 Entry Date: 28/08/2005

Patents / Registrations:

Location: 19C / 3

Image: c:\CCimages\MNR842b.JPG

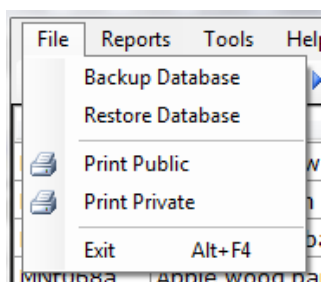
References

Title	Author	Publisher	Pages	Year
The Ultimate Corkscrew Book	Don Bull	Schiffer Publishing	70	1999
Mechanical Corkscrews	Ferd. Peters	Beheermy Pintex B. V.	116,117	1999
Cavatappi	deSanctis & Fantoni	Bompiani	156	1993

We will take the page section by section as follows:

1. Menu line:

The **File** tab allows:



Backup Database – to make a backup of the database; it is recommended that you do this after each use or at least on a regular basis.

Restore Database – allows you to revert to a saved (backed up) data file, in case of a real problem you encountered that had compromised your data (disk crash, etc.). This is also a neat feature when you have two or more computers and you want them all kept up

to date (see further explanation below)

Print Public – allows you to print a one page report of the record showing only details that do not include private data.

Print Private – as above, but it does include all private data as well.

Exit – allows you to close the program.

The **Restore Database** when used as the feature to copy a database from one computer to another is used as follows:

1. On the "source" computer from which you are copying the database do a backup (the command is under the File button – see above) and save the backup file on the source computer's desktop.

2. Then, copy this backup file with a name something like this:

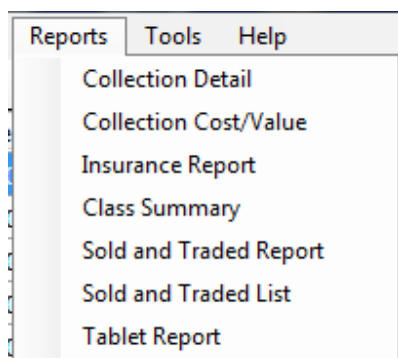
collector_backup_2011_55_31.sdf onto a memory stick in the "source" computer.

3. And then copy this file onto the desktop on the "target" computer to which you are transferring the data.

3. Now open the CC software on the "target" computer and you will see under the File button a "Restore" function. Click on that and follow instructions. Now you will have all your data there.

Note: We assume that you had already installed the same version of both the latest SB and CC programs on the "target" computer **before** you do the above transfer.

The **Reports** tab allows:



All reports start out similar to this. The notable issues are that on some, you have the option to choose:

1. Which **Classes** you want to report on (**ALL**) is the default
2. The "Purchase Date" check box defaults to the "**All**" option, but if you click this off, you can choose the date range you want to see.
3. The Date range for the report is set here, if you choose it – From/To dates
4. You can also choose what you want to report on, the options are: "**Collection**", "**Not in Collection**" and "**Sold or Traded**".

Now, just click on the  button and the report will be generated.

Collection Detail – will print a complete report with a selection of data items for every corkscrew in the database – here is an example:

Collection Detail

Code	SBCode	Cost	Est Value	Purchase Date	Description
LEVER S					
LCe410a	LCe410	\$10.00	\$0.00	15/03/1997	Probably German concertina with 4 finger handle, unmarked
LCe900a		\$50.00	\$50.00	01/10/1995	Concertina marked PC
LCe901a		\$30.00		25/05/2001	Modern Massive Italian Concertina
LCm900a		\$30.00		25/03/2002	Miniature Concertina, brass and marked: VINS FAMY
LCs101a	LCs101	\$105.00	\$0.00	15/05/1997	This concertina is called the DEBOUCHTOUT so marked
LCs101b	LCs101	\$10.00	\$0.00	25/09/1997	French concertina, DEBOUCHTOUT, wire helix
LCs210a	LCs210	\$10.00	\$0.00	25/09/1997	French concertina with centre cuts csew, Mk: KIDBOUCHE

Collection Cost/Value – very similar to the first report but has some different data and shows the differences between cost and present estimated values.

Cost/Value Report

Code	Cost	Est Value	Difference	Description
ZPw680b	\$82.00	\$0.00	-82	Champagne Tap, With Thread
ZPw705a	\$120.00		-120	Champagne Tap, With Thread, English
ZPw730a	\$48.00	\$0.00	-48	Champagne Tap, With Thread, English
ZPw738a	\$150.00		-150	Champagne Tap, With Thread
ZPw740a	\$75.00		-75	Champagne Tap, With Thread, English
ZPw742a	\$200.00		-200	Champagne Tap, With Thread
ZPw762a	\$37.00		-37	Champagne Tap, With Thread
ZPw784a	\$44.00		-44	Champagne Tap, With Thread

Insurance Report – is a report listing corkscrews over a set value (you specify the minimum value) – here it is \$100.

Insurance Report

Code	SBCode	Cost	E st Value	Purchase Date	Description
NON SCREW EXTRACTOR					
NHb010a	NHb010	\$450.00	\$0.00	04/08/1995	Folding version of the Greeley's corkscrew
NHb900a		\$100.00		12/06/2009	Argentinian folding bow hook
NHe013a	NHe013	\$700.00	\$0.00	24/05/1995	Greeley 1888 US Patent: box of 10
NHe031a	NHe031	\$138.00	\$0.00	15/06/1988	Somsou & Bruneaux 1862 French Patent: ivory handle
NHe080a	NHe080	\$290.00	\$0.00	01/10/2001	American All Steel marked Oval Handle Hook
NHe080a	NHe080	\$780.00	\$0.00	19/03/2005	Wood handled ear shaped hook
NHe030a		\$500.00		18/08/1998	German Cork Puller, Wood handle and Ear type hook

Class Summary – is a one page report which summarizes all SCReWBase classes in one neat little report (the full values have been partially erased to preserve the privacy of the report owner, so the numbers do not add up).

Class Summary Report

Class	Cost	E st Value	
<No Class>	\$999.00	\$1,675.00	57 Pieces
ACCESSORIES	\$528.00	\$295.00	28 Pieces
BAR SCREWS	\$290.00	\$375.00	10 Pieces
COMBINATIONS	\$500.00	\$13,168.00	07 Pieces
EASERS	\$204.00	\$8,008.00	81 Pieces
FIGURALS	\$735.00	\$4,100.00	87 Pieces
KNIVES	\$392.00	\$1,075.00	76 Pieces
LEVER S	\$449.00	\$2,450.00	23 Pieces
MECHANICALS, FRAMES & BARRELS	\$443.00	\$11,900.00	87 Pieces
NON SCREW EXTRACTOR	\$900.00	\$7,835.00	53 Pieces
POCKETS AND PROTECTED	\$556.00	\$10,606.00	99 Pieces
SELF PULLERS	\$002.00	\$3,315.00	62 Pieces
T-SCREWS AND OTHER STRAIGHT PULLS	\$347.00	\$8,652.00	61 Pieces
Z-CHAMPAGNE & SODA TOOLS	\$449.00	\$1,095.00	02 Pieces
Grand Total	\$4,794.00	\$74,549.00	33 Pieces

Sold and Traded Report – Be sure to select the "Sold or Traded" status at the top in addition to other parameters above, otherwise you will get your entire database reported.

Now the report appears as follows:

Sold and Traded Report

Code	Purch Price	Sell Price	Purch Date	Sold Date	From	Sold To
+AC002	3	5	12/15/1984	3/23/1997		
Silver spoon and shot bottle opener						
+CT080	5	10	8/16/1992	3/23/1997		Vivanco
Unmarked champagne cork grabber pliers etc.						
+CT092	60	60	5/15/1994	6/21/1997		Vivanco
Long Soda tap, American, rosewood handle, snake spout						
+FI244	80	80	8/2/1992	6/21/1997		Vivanco
Art Deco Pig by NEGBAUR, not marked						
+PC084	28	0	7/15/1990	7/15/1995		Don Bull - a gift to him
"A Crooked Business"						
+RB032	125	600	11/22/1994	3/23/1997		
English Four Poster, narrow rack King Screw						
CUu600a	1000	3920	10/1/1995	5/1/2010	Nugent	Rafael Vinaco - ICCA Auction
Folding pistol knife with stag horn scales						
EBb013a	250	500	10/1/1995	11/15/2009	Nugent	Ferd Peters, ICCA #4 Auction
Plated plain brass button, Rd 202169, celluloid shank sleeve, bone handle						
FDh900a	280	280	9/20/2003	8/8/2010	Harbottle, Patricia	Trade to Wayne Meadows for Ch Stand
Sitting Brass dog with folding screw (Austrian?)						
LLj013a	2500	2250	7/15/1990	3/23/1997	Michael Gordon	
DORDET's lever well marked but the screw is not original						
LLt300a	900	1500	5/15/1988	3/23/1997		
Goodall's THE HOLBORN LEVER Pat #6793						
MGx900a	75	75	3/6/2009	8/6/2010	Luterman	Trade to Wayne Meadows
Italian short frame coffee grinder						
MLf070b	1200	1550	12/28/2002	6/10/2008	Florida, Private	Gosselin, Robert ICCA Auction
Woodman 1886 US Patent						
MSf080a	300	350	4/26/1998	5/10/2008	Dean Walters	Hunter, Ross - ICCA Auction 1
Perille's BAGUE, marked with their stamp JHP etc.						

Note that certain fields and values have been erased to maintain the privacy of the participants.

Sold and Traded List finds the greatest use when you need to account for past activities as in valuations and even for tax purposes.

Report window showing filters: Sold Date, ☒ All, From: 01/01/1980, To: 13/08/2012. The window includes navigation buttons and a 'Run' button.

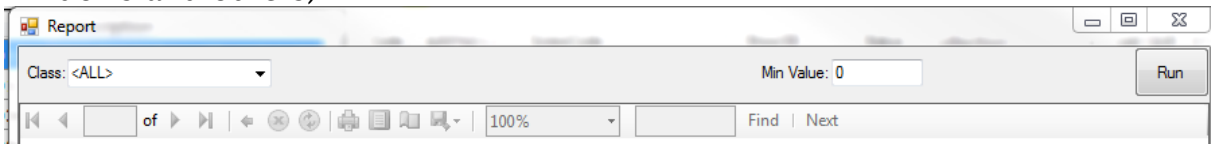
Here is what you get:

Sold and Traded List

Code	Purch Price	Sell Price	Purch Date	Sold Date	From	Sold To
+AC002	3	5	12/15/1984	3/23/1997		
+CT080	5	10	8/16/1992	3/23/1997		Vivanco
+CT092	60	60	5/15/1994	6/21/1997		Vivanco
+FI244	80	80	8/2/1992	6/21/1997		Vivanco
+KF036	50	0	9/15/1990	1/1/0001		
+PC084	28	0	7/15/1990	7/15/1995		Don Bull a gift to him
+RB032	125	600	11/22/1994	3/23/1997		
CCx090a	16	0	10/1/1995	1/1/0001	Nugent	
CUu600a	1000		10/1/1995	5/1/2010	Nugent	ICCA Auction
CUu902a	20	0	10/1/1995	1/1/0001	Nugent	
EBb013a	250	500	10/1/1995	11/15/2009	Nugent	
EBt390a	15	0	10/1/1995	1/1/0001	Nugent	
FDh900a	280	280	9/20/2003	8/8/2010	Harbottle, Patricia	Trade to Wayne Meadows
LLj013a	2500		7/15/1990	3/23/1997	Michael Gordon	
LLt300a	900		5/15/1988	3/23/1997		
M Gx900a	75	75	3/6/2009	8/6/2010	Luterman	Trade to Wayne Meadows
M Lf070b	1200		12/28/2002	6/10/2008	Florida, Private	
M Sf080a	300	350	4/26/1998	5/10/2008	Dean Walters	Hunter, Ross ICCA Auction 1
MTb060b	80		3/31/2009	11/15/2009		Bob Owen, ICCA #4
NP f030a	0	245	10/1/2001	5/10/2008	Ralf Hermann	
SSf090a	30	0	10/1/1995	1/1/0001	Nugent	
SSf220a	418	418	3/15/1991	3/2/2005		Traded it to Howard
Total	7435	13158		22	Items	

Note that certain fields and values have been erased to maintain the privacy of the participants.

Tablet Report is an incredibly useful report. This creates a PDF file of your collection which is formatted to fit tablets (iPad, Samsung, Blackberry, Android, windows and others).



You have some choices here. In the class box you can select one Class or ALL (which is the default). There is a Min Value box on the right and here you can put a lower limit on what will be in the report (you may not want the cheap stuff to be there). The, just click the Run button and away you go.

You will love it!!! Here is what one page looks like:

SCReWCode: MCF018a

Description: Fischer 1902 German/American Mechanical Frame with Crab Piece, Fancy Handle

Comments: PICTURED: Fischer 1902 German/American Mechanical Frame with Crab Piece. The handle is a nice and heavily decorated silver handle. The frame is equipped with a crab piece to grab the handle when at the end of the screw entry.
OPERATION: Starts with shaft in top position and frame placed over bottle to center worm. Clockwise turning inserts worm - when the crab piece engages frame, further clockwise turning causes the lefthand threaded shaft to rise and pull cork into frame.
MISCELLANEOUS: American manufacturers frequently combined these with various decorative handles for sale in the U.S.

Markings:

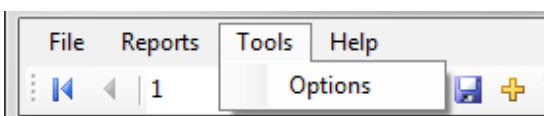
Country: Germany

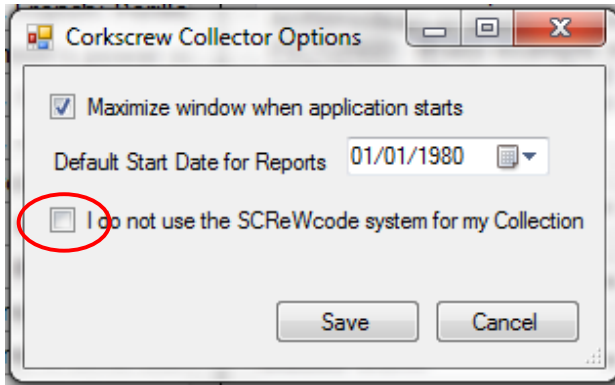
Patents: German DRGM 178,437, G. Th. Fischer, 12 Jun 1902



But be careful if you ask for the entire database, the report generation will take a considerable amount of time, perhaps even a half hour and the resulting file will be very big!

The **Tools** tab allows:

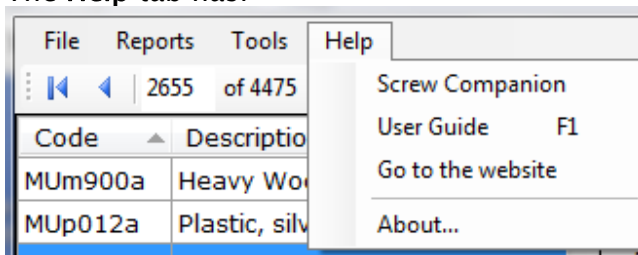




Options – where you can specify if you want a full page display when the page opens and you can specify a new default report start date. The last option (circled) here is for those users *who have their own private coding system*. By clicking the box, a check mark appears and the software will skip all the logic in defining codes, 900 numbers and adding a,b,c,...z letter at the end of the code. **Be careful; click**

this ONLY if you intend to use your coding system, other than SCReWCode. Although you can switch back to the SCReWCode system, the records you had entered with your own code will remain like that. This is a very good idea if you have your own system at the start but you want to convert to the SCReWCode standard later. Just enter new pieces with the SCReWCode system and later on change the old codes to the SCReWCodes as time permits.

The **Help** tab has:



Screw Companion will bring up the document in a PDF document.

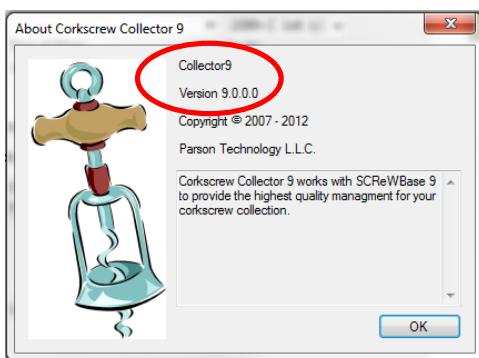
User Guide will bring up this document in a PDF file format and you can read it or print it as you wish.

Go to the website will take you to the Corkscrew Software Website at:

<http://www.corkscrewsoftware.com/>

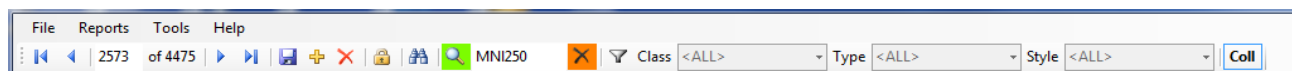
Where you will find the latest software news and you can ask questions.

About displays the version of the software you are running here.



It is very important that if you have any problems that you report it with this version number so the problem can be traced to its roots.

2. Command Line:



A B C D E F G H I J K

The fields are marked with letters and here is the same set in SCReWBase but CC has additional functions as you will see below and here is what these will do:

A – This button |< allows you to skip to the very first record in the database – "C" below goes to the very last record.

B – The field that allows you to advance or reverse the records you want to see, also they show how many records are in the database – 4475 in this case.

C – This button >| allows you to skip to the last record in the database – "A" above goes to the very first Class.

D – The "binocular" or position button moves the record pointer (highlighted record) to wherever you want in the database – the start of the LD Class/Type here. But there is another way to get this done too – just enter a class Letter or a code completely and then while holding the shift key, press the Enter key – works like a charm!

E – is the search toggle button (like a magnifying glass). You can either search the database or use the filters explained below. When you are in search mode, this button is green (as shown). When you are in filter mode, this button has a blue background and the filter button (G) is green (looks like a funnel). To return to search mode you click on this button.

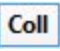

F – The search field – type in what you are looking for – e.g. Perille and then hit Enter to search. The record will be found in which the word or characters exist that are displayed in the F box. *Hint:* search for more than one character as a single letter is in every record in the database. **Note:** This is a different function than the Binocular or the *Shift-Enter* combination – those *positions* the data base while this one actually Searches it and lists only the records that meet the search criteria. Try it and see how useful this is.

G – Filter toggle button (a funnel) that is similar to the search toggle button. If it is green then you are in filter mode and if not, you can click it to switch to filter mode. The filter mode enables the filtering by Class/Type/Style – e.g. select all Z Class only. *Hint:* using this, you can get a count of the records in the database for a class

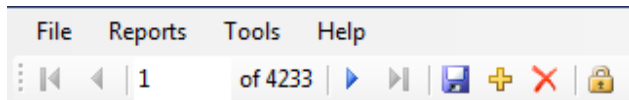
H – The Class selector box

I – The Type selector box

J – The Style selector box

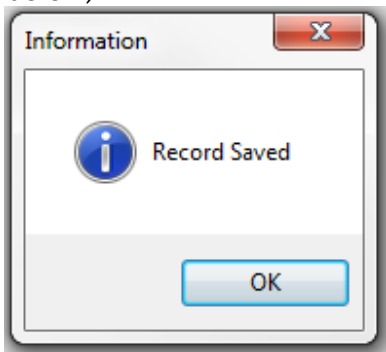
K – If this button shows  only the current collection is shown no "Sold or Traded" or "Not in Collection" are included. If  shows, everything is displayed. This also works for searches and all other functions.

Here are the special buttons for CC – the difference between SCReWBase and CC.

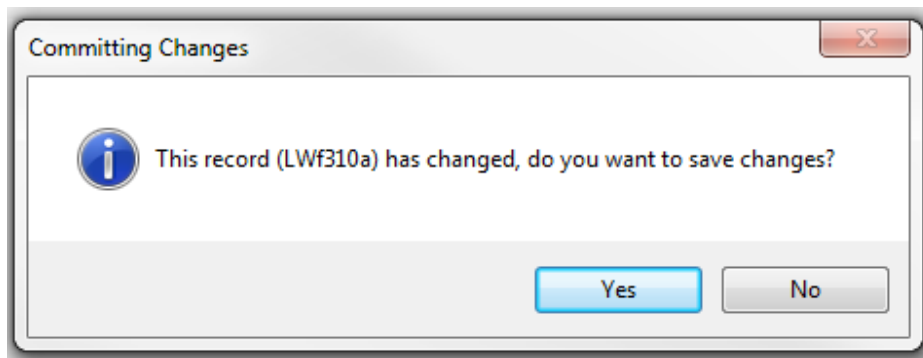


W X Y Z

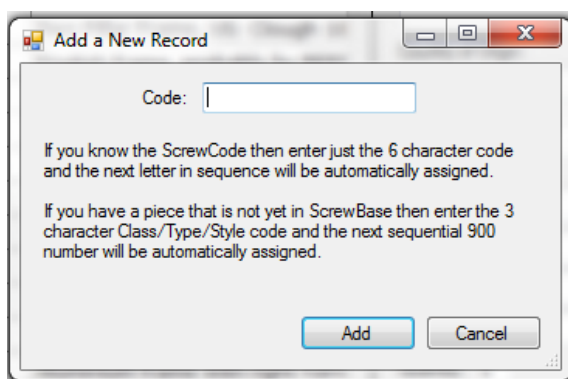
W – "save" the current record you are editing – if you forget, the system will ask you to do it anyway as soon as you try to move to a different record or close the system (see picture below).



This is what happens if you had changed the record but did not "save" it using the diskette icon:



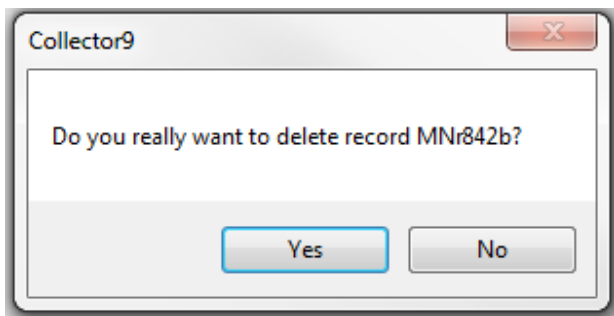
X – this button allows you to add a new record. When clicked on you get:



Here, you have some choices. If you are using the SCReWBase coding system, enter either: 1) the actual SCReWCode that you determined before (most likely you already found it in SCReWBase; or 2) enter the 3 digits for Class, Type and style **C/T/s** and the system will assign a 900 number, plus a small letter (a,b,c,...z) as appropriate; or 3) enter your own code if you are using such. When you click on Enter, CC will create a record and you can start filling it in. *Hint for users who use their own coding system* – it will be very beneficial if you enter the appropriate SCReWCode when the new record is displayed for editing as shown below (with the red circle around it) along with the Class/Type/Letters (green circles) because this will allow you to use most of the features of this program.

Code: **MRb030a** ScrewCode: MRb030 ☐ ShowSB Status: Collection Last Updt:
 Class: **M** MECHANICALS, FRAMES Type: **R** RACKS Style: **b** barrel

Y – this button allows you to delete a record.



Z – this button opens up the *private data* areas below the left list column as follows:

Title	Author	Publisher	Pages	Year
German Corkscrew Registrations 1891 - 2000	Ferd. Peters	Beheermaatschappij Pintex B. V.	14	2002
Deutscher Gebrauchsmusterschutz für Korkenzieher...	Klaus Pumpenmeier		21	1996
The Ultimate Corkscrew Book	Don Bell	Schiffer Publishing	138	1999

The additional fields are shown here in the box on the left. All of these are user filled and the Tex1 – 3, Currency1, Date1 and the Numeric1 and 2 are user defined and are used for whatever you see fit. Note also the additional two tabs next to the "References" tab. These are for users who collect **Auction History** data or want to add a long memo in tab **Memo1**, more about these below.

Hint for users who use their own coding system – although you decided to use your own coding method, you can still make use of almost all of the features of this system. For example, the filter function works if you entered the Class, Type and Style identifiers into the appropriate boxes when the record was entered (or at any time later too) – see the notes above. The filter function works on the system letters Class/Type/style as shown here (this is one reason why these letters should be filled in when the record is entered or even later):

Class: LEVERS Type: DOUBLE Style: rack

Therefore, you can look at the list of corkscrews you have in any Class and even to the most detailed C/T/s defined list even if your coding system is unique and unrelated to SCReWBase.

3. Record List Column

This part of the front page shows the list of records at this part of the database – that is wherever you positioned it before. The following information is available:

Code – shows the SCReWCode of the record.

Description – is a brief one liner of what the record is.

Hint: you can see the whole description if you move the horizontal slider at the bottom or highlight the record and then read all the information in the record in the next box.

Hint: you can scroll down using the slider on the side, or better yet, the down arrow to get to the next line.

Code	Description
MN0000	TYPE SUMMARY: THREADED NEC
MNI000	STYLE SUMMARY: LEFT THREADE
MNI220a	Two Pillar Frame, French: Hollar
MNI222a	Two Pillar Frame, French: Perille
MNI222b	Two Pillar Frame, French: Perille
MNI250a	American, Williamson's power co
MNI250b	Two Pillar Frame, US: Clough 18
MNI251a	Two Pillar Frame, US: Clough 18
MNI270a	English frame, probably by REED

Code: MNI250a

Class: MECH

Description:

4. Collector data

Code: ScrewCode: ☐ ShowSB Status: Last Updt:

Class: SELF PULLERS Type: SPRING TENSION Style: frame - joined at bottom

14

This is self evident, the SCReWCode (if you know it), Class letter and name, Type letter and name, and Style letter and name. But the "Collection" field has three obvious options:

☐ Status: Sold or Traded Last Updt: 19/11/2010
 ENSION Collection Not In Collection Sold or Traded ined at bottom
 kes: wood red rounded ends

Normally, the "Collection" option is used and it is the default, so you don't have to do anything if you *do own* the corkscrew. However, if you have it on you "wish list" or needed list, then use the "Not in Collection" option. Finally, if you "Sold or Traded" a corkscrew and so it gone from the collection, but you want tyo keep the record, use this option.

Then, note the box in front of the "ShowSB" title. If you click this, a check mark will show


☐ ☒ ShowSB Copy Stat

and the page will display the SCReWBase data if there is a SB record with the same SCReWCode that you have entered on this record – note

that the page with SCReWBase information will have slight yellow tint to show that this is not your data. The left picture below is not checked (all white background), the right one is checked (some yellow background) – note the different pictures and different descriptions and data. **Note:** *the check mark stays on so you can go from record to record if you want to see SCReWBase records but you have to turn it off when you no longer want it – it will not go off on its own!*

Code	Description
LDr012a	English MAGIC LEVER: cast curv
LDr015a	Probably English, unmkd, but lo
LDr031a	Double lever, like the "Magic lev
LDr040a	A Spanish version of the Magic c
LDr051a	Spanish Magic Lever Type: cut c
LDr060a	HOOTCH OWL: Center worm
LDr121a	Double Lever rack CUDZIKOWSKI
LDr141a	Italian double lever, brass and s
LDr141b	French Lever Smooth Inner Sha
LDr220a	Italian all brass double lever, ur
LDr230a	Italian Double Lever Wide Rack:
LDr271a	Stamped Steel Lever ELESAN: A
LDr272a	Stamped Steel Double Lever ET
LDr273a	Stamped Steel Lever GAUMEN: s
LDr273b	Stamped Steel Lever E.D.E. : Ca
LDr273c	Stamped Steel Lever GIPE: Cap
LDr421a	Italian double lever, marked an
LDr460a	Italian Double Lever Wide Rack
LDr520a	Italian Novelty Wide Rack CAMP
LDr900a	Monopol double lever Mkd: M M
LDr901a	Modern piece, buggs bunny in b
LDr902a	Modern All Plastic Double Lever
LDr903a	Australian Double Lever with a
LDr904a	Australian Double Lever with a
LDr905a	Double Lever Unmarked Simple

Code: LDr060a ScrewCode: LDr060 ☐ ShowSB Status: Collection Last Updt: 06/09/2008
 Class: L LEVERS Type: D DOUBLE Style: r rack
 Description: HOOTCH OWL: Center worm
 Comments:
 The HOOTCH-OWL patented by R. G. Smythe of Valley Stream, New York, 1935. The body is cast bronze, the arms of the leavers act as cap lifters and twist cap removers, the screw is centre cut steel, pp 101. VARIATIONS: This has a center worm which is the more common type. A wire helix type (rarer) OPERATION: Screwing in by turning the whole implement, pulling out by pressing the arms down MISCELLANEOUS: Combination with nutcracker and crown cap lifter
 Country of Origin: United States Previous Ref #: DL036
 Manufacturer: Mfr Date: 20th C 1st 1/
 Type of Worm: Quality: Excellent
 Bladed Worm: Size: Markings: HOOTCH-OWL
 Advertising: Quantity: 1 Entry Date: 13/10/2007
 Patents / Registrations: US Design patent 2,115,289 by Smythe Richard G., 26 Apr 1938
 Location: 131 / 3



File Reports Tools Help

2191 of 4233

Class <ALL> Type <ALL> Style <ALL> NC

Code	Description
LDr012a	English MAGIC LEVER: cast curv
LDr015a	Probably English, unmkd, but lo
LDr031a	Double lever, like the "Magic lev
LDr040a	A Spanish version of the Magic c
LDr051a	Spanish Magic Lever Type: cut c
LDr060a	HOOTCH OWL: Center worm
LDr121a	Double Lever rack CUDZIKOWSKI
LDr141a	Italian double lever, brass and
LDr141b	French Lever Smooth Inner Sha
LDr220a	Italian all brass double lever, ur
LDr230a	Italian Double Lever Wide Rack:
LDr271a	Stamped Steel Lever ELESAN: A
LDr272a	Stamped Steel Double Lever ET
LDr273a	Stamped Steel Lever GAUMEN: i
LDr273b	Stamped Steel Lever E.D.E. : Ca
LDr273c	Stamped Steel Lever GIPE: Cap
LDr421a	Italian double lever, marked an
LDr460a	Italian Double Lever Wide Rack
LDr520a	Italian Novelty Wide Rack CAMP
LDr900a	Monopol double lever Mkd: M M
LDr901a	Modern piece, buggs bunny in b
LDr902a	Modern All Plastic Double Lever
LDr903a	Australian Double Lever with a
LDr904a	Australian Double Lever with a
LDr905a	Double Lever Unmarked. Simple

Code: LDr060a ScrewCode: LDr060 ☒ ShowSB **Copy** Status: Collection Last Updt: 06/09/2008

Class: L LEVERS Type: D DOUBLE Style: r rack

Description: Smythe 1938 Us Design Patent HOOTCH OWL: Center worm

Comments:

VARIATIONS: Type of worm

PICTURED:HOOTCH OWL: This has a center worm which is the more common type.

MARKINGS: HOOTCH OWL

Country of Origin: United States Previous Ref #:

Manufacturer: Mfr Date: 20th C 1st 1/2

Type of Worm: Bladed Worm Quality: Excellent

Size:

Markings: HOOTCH-OWL


Advertising:

Quantity: 1 Entry Date: 20/07/2009 12:02

Patents / Registrations:

US Designe patent 2,115,289 by Smythe Richard G., 26 Apr 1938

Location: 131 / 3



Look at the graphics above the top picture is the "normal" state and the bottom when you had clicked the "ShowSB" button. Now you will see a small button "**Copy**" to the right of the ShowSB checkbox (circled in red) which allows you to copy SCReWBase data into CC records. This is a great way to save effort by taking much of the information easily from the SCReWBase database. When the **Copy** button is clicked, a dialogue box **Copy Fields from SCReWBase** pops up as seen below:

Copy Fields from ScrewBase

Select the fields you would like copied from ScrewBase:

☐ All Text

☐ Description

☐ Comments

☐ Patents

☐ Manufacturer

☐ Manufacturer Date

☐ Country of Origin

☐ References

☐ Picture

OK Cancel

Now you can copy using any of the fields given by clicking on the check-box and when you click **OK** the data will be copied into your record. But, the data copied ***will NOT destroy*** anything you have already in the fields checked but will just add to it by concatenating it to what you might have, if anything.

5. Comments

Comments:

The HOOTCH-OWL patented by R. G. Smythe of Valley Stream, New York, 1935. The body is cast bronze, the arms of the leavers act as cap lifters and twist cap removers, the screw is centre cut steel. pp 101.

VARIATIONS: This has a center worm which is the more common type. A wire helix type (rarer)

OPERATION: Screwing in by turning the whole implement, pulling out by pressing the arms down

MISCELLANEOUS: Combination with nutcracker and crown cap lifter

Simply, details as they are available – sometimes a lot and sometimes little, but you are in charge here, enter as much as you like!

6. Details

More details about the piece. Again, this is all your *private* information, but much could be just copied from SCReWBase as shown above.

All fields are self-evident, except the "Location" one which is used to show where the piece is in the collector's house, vault, storage, drawers, etc.

Note that five of the fields have drop down buttons which allows you to pick from a number of standard options built in. For example, Country of origin (United States here) will give you many choices (the typical corkscrew maker Country) – but if your Country of Origin is not there, you can just type it in.

Country of Origin:	Previous Ref #:
United States	DL036
Manufacturer:	Mfr Date:
	20th C 1st 1/2
Type of Worm:	Quality:
Bladed Worm	Excellent
Size:	
Markings:	HOOTCH-OWL
Advertising:	
Quantity: 1	Entry Date: 13/10/2007
Patents / Registrations:	
US Design patent 2,115,289 by Smythe Richard G., 26 Apr 1938	
Location: 131 / 3	

7. The picture



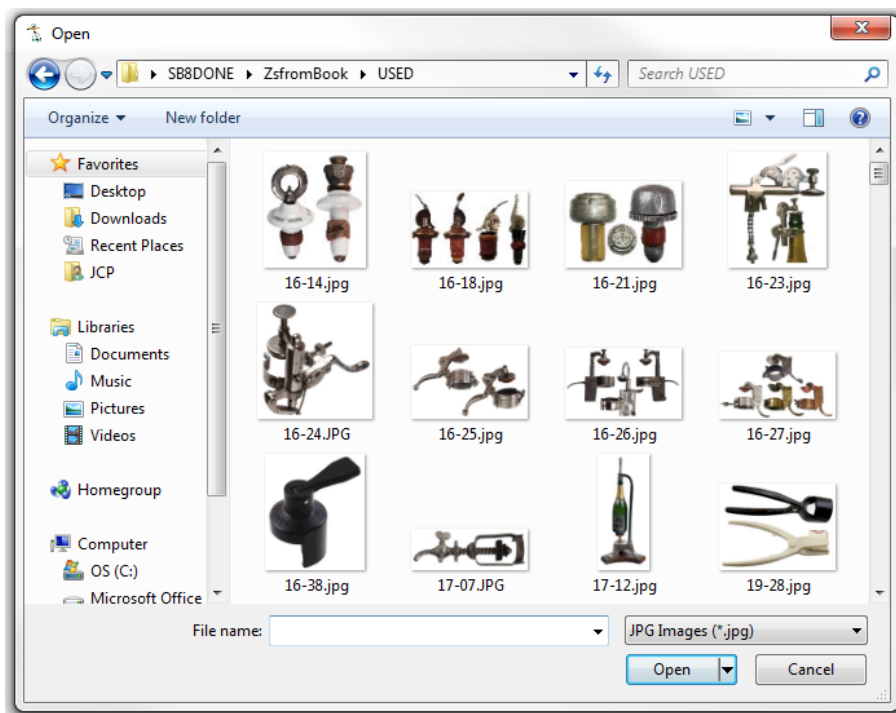
The picture is normally yours, but you could copy it from SCReWBase or wherever (if you just have it as a piece you covet and shown as "Not in Collection"). But if you have the piece then typically, you would use your own picture because every corkscrew is unique as it has been used and scratches, wear, damage, etc. make it unique so it can be identified specifically (good for insurance purposes).
Hint: – if you left-click on the picture, you will get a usually larger picture with details more clearly shown – this is limited by the details supplied by the photographer who took the

picture. Here both sides are photographed and then a single picture is formed by joining the two together.

Here is how to **ADD a Picture** to the record. You will find at the lower right part of the screen the following 3 boxes:



Click on the "Add Image" button and the system will open a typical Microsoft file box:



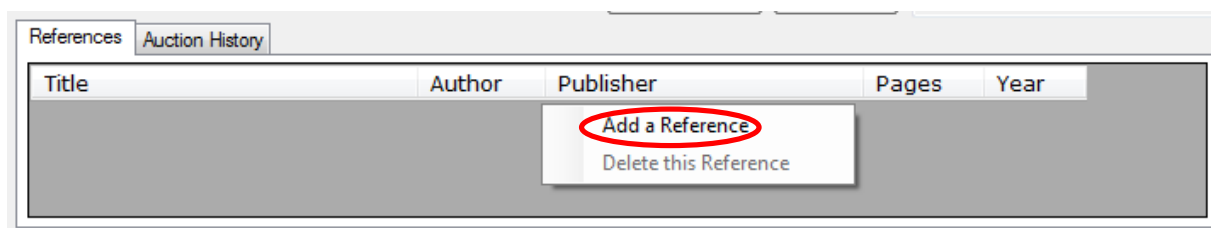
All you have to do is to navigate to the place where the picture is stored, select the picture file you want in this record, click "Open" and it is done.

8. Reference Material

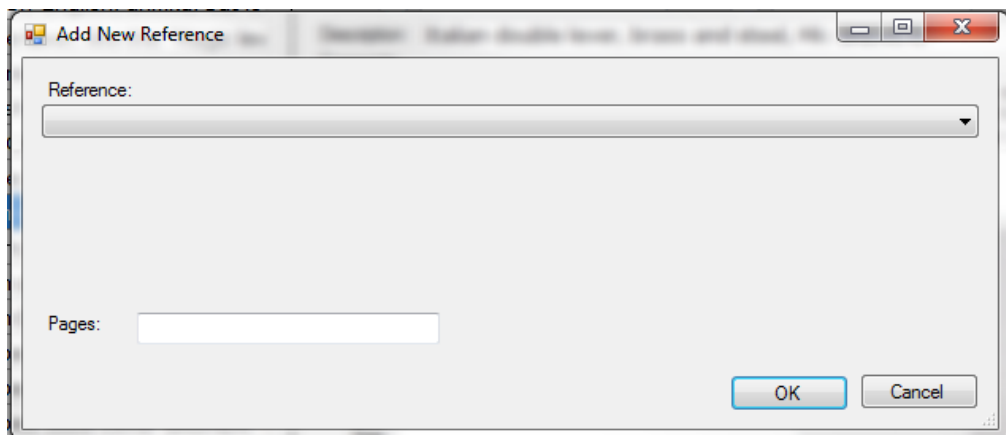
References Auction History Memo1				
Title	Author	Publisher	Pages	Year
British Corkscrew Patents from 1795	Fletcher Wallis	Vernier Press	33, 34	1997
The Corkscrew	deSanctis & Fantoni	Mazorati Editore	92	1990
Mechanical Corkscrews	Ferd. Peters	Beheermy Pintex B. V.	197, 199	1999

Here we have references to publications on corkscrews, complete with the book or document title, author, publisher, the page number(s) and the year of publication. Note also the other two tabs which may be used for private information as shown here.

Here is how to **ADD a Reference** to the record. Move the cursor into the Reference field and Right-Click the mouse. The following box comes up:



Now click on the "Add a Reference" and a small box pops up on the screen:



There is a long list of corkscrew reference books and other publications already in the system and by clicking on the pull down list button (circled in red above), the alphabetically sorted by Author list drops down and you can select the publication you want in here:



Click on the one you want and then enter the page number where the piece is in the reference document.

But if you do not find the reference you would like to insert here, just click on the <NEW> entry and the software gives you the following options:

Reference: <NEW>

Title:

Author:

Publisher:

Pub Date:

Pages:

OK Cancel

You can now type in your own reference details as shown here and enter the page number in the reference where the item is that you selected. When done, click OK.

Auction History is a place where you may wish to record auction data from wherever you follow corkscrew trading (e-Bay, Christie's, etc.) This information will provide you some basis for evaluating your Estimated Values (Est. Value) in the private area.

References		Auction History		
Auction	Date	Price	Curr	Note
CCCC	05/08/2011	345	Euro	This is a sample record for demo only

How to **ADD, DELETE or EDIT an Auction History item** is shown here. First, click on the Auction Item tab. Then right click in the space a box pops up showing three options:

References		Auction History		
Auction	Date	Price	Curr	Note
CCCC	05/08/2011	345	Euro	This is a sample record for demo only

Add an Auction Item

Delete this Auction Item

Edit this Auction Item

If you click on the **Add an Auction Item**, the following box pops up and you fill in the data as you have it. Click "save" and it is done:

A screenshot of a Windows-style dialog box titled "Add Auction History for LDr141a". The dialog has a standard title bar with minimize, maximize, and close buttons. Inside, there are several input fields: "Auction:" followed by a text box, "Date:" followed by a dropdown menu showing "05/08/2011", "Price:" followed by a text box, "Currency:" followed by a text box, and "Note:" followed by a large text area with a vertical scrollbar. At the bottom right, there are two buttons: "Save" and "Cancel".

To **Edit this Auction Item**, you follow the same instructions as above for entry, except select the one item you want to edit, Right-Click in the space and select the Edit option. The same box as above comes up with the information filled in and you can edit it as you like.

To **Delete this Auction Item**, move the cursor into the space. Now select the item you want to delete and then Right-Click to bring up the dialog box, select Delete this Auction Item and the system will show the following caution box and you do what is appropriate:

A screenshot of a Windows-style caution dialog box titled "Collector8". It features a yellow warning triangle icon on the left. The main text reads: "Are you sure you want to delete auction item: CCCC (05/08/2011)?". At the bottom, there are two buttons: "Yes" and "No".

Private Memo Field is under the tab Memo1. This field is similar to the Auction History, but free format that can be used as desired. *Note that this only shows in Private mode – in public mode it is hidden as are the other private fields.* Just click on the tab and then click in the field and start typing or editing or deleting, whatever you want.

A screenshot of a tabbed interface. At the top, there are three tabs: "References", "Auction History", and "Memo1". The "Memo1" tab is currently selected and active. Below the tabs is a large, empty text area with a vertical scrollbar on the right side, intended for entering a private memo.

IV. Finding things

This is essentially the same process as in SCRewBase except that you would know that you entered the corkscrew into CC already. Of course, from time-to-time, most of us forget what the exact SCRewCode is for a specific item, so finding it will be important when we want to see something about it. So here is one way to get this done.

If you know the Class or even the Type of a corkscrew you want to identify, just type the two letters and then click the binocular (or type Shift-Enter) and the pointer (highlight in the Record List Column) will be placed at the start of that Class/Type. If you entered the entire 6 digit code (no need for the "a", "b", etc.) then the record will be found. *Note that this function only looks at the Code while the Search function searches all useful fields.*

You can enter a name such as "Perille" or a word such as "France" or "Syroco" (no quote marks are required) and the items which contain the character string you typed in will appear in the Record List Column:

Here we searched for the word "Perille" and found 70 records that contained the word.

Hint: – it is best to select search criteria as close to what you want as possible so that you don't have too many to look at.

Once the search is complete you can just scroll down the list until you see what you want.

File Reports Tools Help

33 of 77

perille

Class: <ALL> Type: <ALL> Style: <ALL> Coll

Code	Description
LSp501a	Hinge-joined Leverarm LE PRESTC
LSp510a	Perille 1899 French Brevet Hinge
LSp511a	Perille 1899 French Brevet, Hinge
LWi410a	French, Perille YATOUT, waiter's w
LWi913a	JHPerille "LEVIER" No 105 in JHP C
MC0000	TYPE SUMMARY: CRAB PIECES
MCf030a	French, the Perille L'EXTRACT with
MCf031a	Perille 1876 French Brevete L'EXT
MFf171a	Double Wing, Shaped: ball end ar
MFf190a	Double Wing, Shaped: Perille AER
MFf191a	Double Wing AERO with 5 Hole H
MFf192a	Double Wing, Shaped: Perille AER
MFf576a	French(?) three winged screw ha
MFf577a	French 3 wing with loop top
MFh150a	Perille "WOLTNER" mkd on botton
MFs510a	Close wound spring barrel, Boue
MFs511a	Open wound Perille spring barrel,
MG0000	TYPE SUMMARY: COFFE GRINDER:
MGx010a	PERILLE Coffee Grinder
MI0000	TYPE SUMMARY: INTERLOCKING S
MIf010a	Perille 1888 French Brevete DIAM
MIf012a	Perille 1888 French Brevete DIAM
MIf030a	The Italian "Diamant"
MNI222a	Two Pillar Frame, French: Perille 1
MNI222b	Two Pillar Frame, French: Perille 1
MR0000	TYPE SUMMARY: RACK AND PINIO
MRf052a	London Rack Type: Perille
MRf052b	London Rack Type: Perille Metal H
MRf066a	London Rack Type: Creuse/Perille
MRf090a	Center Pinion: Perille 1876 French
MRf906a	French rack and pinion of the earl
MS0000	TYPE SUMMARY: SWIVEL LOCKS
MSf080b	Perille 1884 French Brevete BAGU
MSf080c	Perille 1884 French Brevete BAGU
MSf320a	French Perille CYCLOPE (unmarke
MSf320b	French, Perille's CYCLOPE, flip top
MWt000	STYLE SUMMARY: WING NUT FIXE
MWt020a	French, Trebutien, Double action

Code: MFf190a ScrewCode: MFf190 ShowSB Status: Collection Last Upd: 30/01/2011

Class: M MECHANICALS, FRAMES Type: F FREE FLY NUT Style: f frame - joined at bottom

Description: Double Wing, Shaped: Perille AERO, ball end handle

Comments:

VARIATIONS: Ball end and five hole handles; two other variations are known with more elaborate fly nuts - see de Sanctis & Fantoni and Peters references; also produced models for wholesalers Bongrand and Manufrance. PICTURED: This piece has the typical Perille handle, the wings are marked at the centre AERO MARKINGS: "AERO" and the frame is stamped with the usual Perille mark: "PERILLE/ DEPOSEE/ JHP" in a circle. OPERATION: Begins with the worm in up position and frame/barrel positioned over bottle to center worm.

Country of Origin: France Previous Ref #: +FR067

Manufacturer: Perille, Jacques - Paris Mfr Date: 19th C 2nd 1/

Type of Worm: Bladed Worm - Center Poir Quality: Excellent

Size:


Markings: "AERO" and the frame is stamped with t

Advertising:

Quantity: 1 Entry Date:

Patents / Registrations:

Location: 118 / 2



Delete Image Add Image C:\CCIMAGES\MFf190a.jpg

References Auction History

Auction	Date	Price	Curr	Note
---------	------	-------	------	------

V. Conclusions

Thanks to all users of this software who had made suggestions and helped to find bugs and shortcomings as without them this work would not have born fruit. Also, our software designer Joseph A. Paradi had done a great job, so we have a terrific program and this enables corkscrew collectors to record their corkscrews in this system.

We had also included some Frequently Asked Questions and answers in the Appendix.

To buy, go to: <http://www.corkscrewsoftware.com/> and follow instructions.

Joe Paradi.

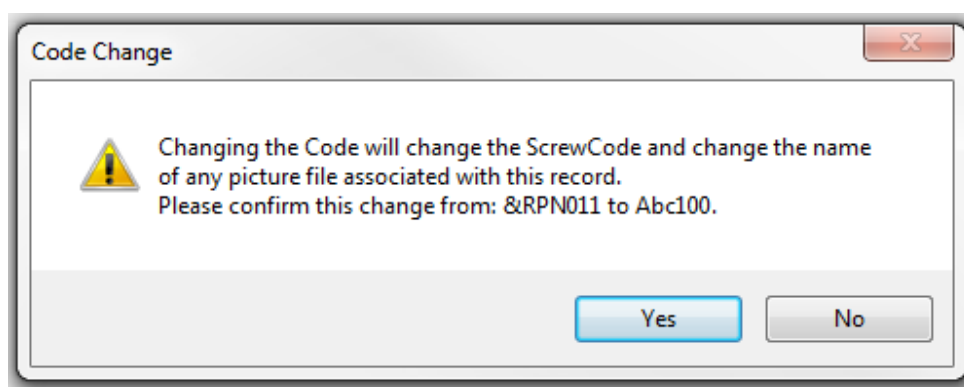
Appendix

Frequently Asked Questions

1. What if I entered a wrong SCReWBase code and then clicked the ShowSB box?

You will get a clear yellow set of fields because the SCReWBase record does not exist, so there is nothing there! Or, if there is a record by that Code but is not the one you want, it will appear – and you will immediately see the problem.

2. I had submitted a "900" record and the record now appears in SCReWBase. I want to change my Code to that of the SCReWBase one. How do I do that? – You type in the new SCReWBase base code in the **Code** box and that is it. However, you will likely have a picture already named the same 900 Code. The system will automatically change the picture's name to match the new code you typed in. When you try to move off the field, you get the following message:

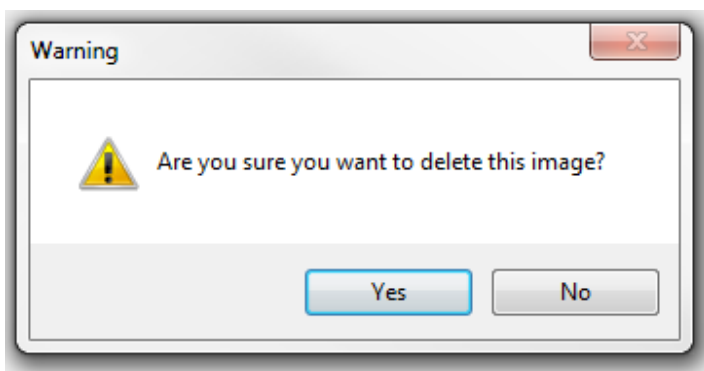


Click on whichever button is correct.

3. What if I want to change the Code for a record? – type in the new code number in the **Code** box and see FAQ #2 above.

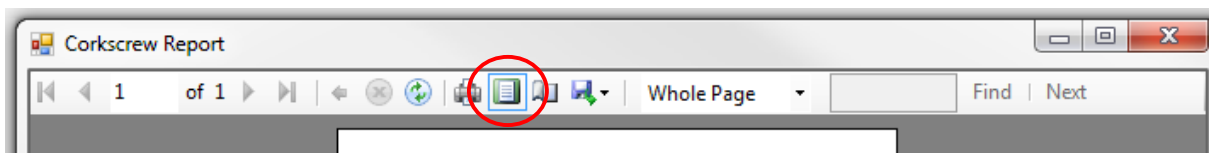
4. I had copied the picture from SCReWBase when I bought the piece but now I have my own picture. How do I replace the picture? – Just below the picture you will find the following

boxes: . Click on "Delete Image" and the system will delete the address in the third box here and also ask you if you want to delete the picture permanently:



Answer Yes or No.

5. Can I email a CC record to a friend? – Yes. From the pull down menu "File" choose Public or Private Print. When the report appears, there is a small copy icon (blue diskette picture) and this gives you two choices:



Choose whatever software you have so that the image is written to your hard disk (e.g. Acrobat (PDF) file) and when asked where to save it, name the file then save it to where you can find it later. Then, simply "Attach" this page to an ordinary e-mail to your friend.

6. How do I know which codes in my Corkscrew Collector have changed? – With each new release of SCReWBase a report and references from old and new for all changes will be available in the release download or on the distribution CD.

7. I took a better picture of my corkscrew, how do I replace the old one? – See FAQ #4 above – the same action is required.

8. All of a sudden all my data is gone and the screen is yellowish, what happened?
You left the check mark on in the ShowSB box – click it off and all will be back to normal.

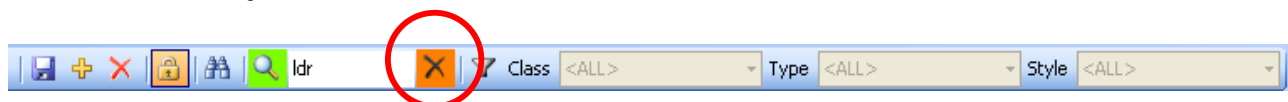
9. Will I receive a new disk each time a new version of the software released? – Yes as there are too many system changes necessary due to Microsoft and other technology changes.

10. How much will it cost to get new releases? – There will be an annual fee for new releases. Go to the website: <http://www.corkscrewsotware.com/> and see what the current prices are.

11. How often will new versions of the software be available? – The plan is to have new versions available annually.

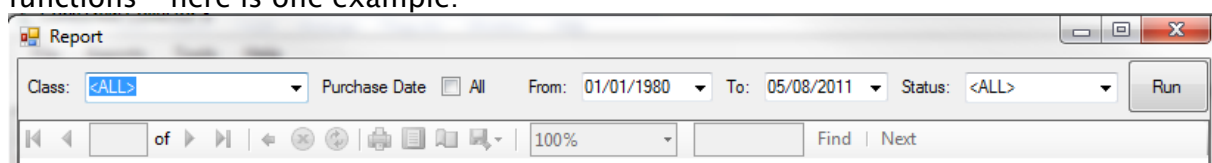
12. How do I position my record column to a specific record? – Just type the record Code in the search box at the top and either click on the Binocular or type Shift–Return. You can also Search for it and get the one record only.

13. How do I get back to the full listing after a Search? – Click on the green magnifying glass (E) or the Red [X] just after the search box.



14. How do I cancel the Filter function and return to the full listing? – Same answer as FAQ #13. But other methods also work – type in the Search box where you want to go next (even one letter representing the Class is enough) and click on the Binocular or type a Shift–Return.

15. How do I customize my reports? – There are several options built into the reporting functions – here is one example:



- a. You can select a specific Class only
- b. You can set a range of dates for which you want the report
- c. You can print only Collection, Not in Collection or Sold or Traded reports
- d. You should click on the "All" check box to make sure you get everything if you want.

Hint: you can combine all of the above for any report. Other reports have similar options.

16. I use my own coding system but want to also use the SCReWBase data for reference, how can I do this? – There are several issues here and all have been discussed in the Users' Guide. Please see the sections printed in blue as these refer to the issues you are concerned with.

17. If I just want to buy CC alone, without SCReWBase, how much will it cost? – Because of the deep integration between CC and SB, it is not possible to purchase or install just CC. You must buy the bundle of SB and CC and install both applications completely. You do not have to use the integration with SB if you do not want to, but it must remain installed on your computer for CC to function.

18. But what do I do if I have my own spreadsheet based records? There is a Data conversion utility you can get from the website by e–mailing.

19. How do I submit corkscrew records for those that are not in SCRewBase now? –

Hopefully, you named all your records that do not have an entry in SCRewBase as a "900" record. If this was done, then you will be able to send in all such records at once with a new functionality that will be provided at a later date.